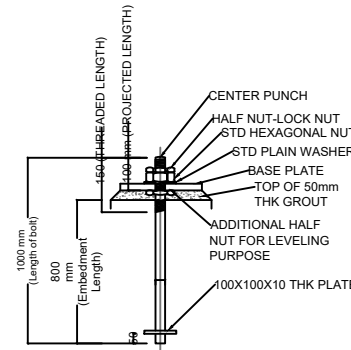
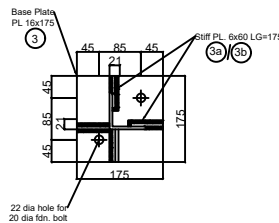
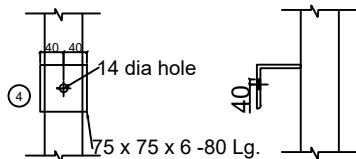


**Note:**  
 1. All the dimensions are in mm.  
 2. The Mounting details shall be as per the approved equipment drawing.

Sl No.	Mark No.	Section	Length		Qty./Set	Unit Wt		Wt/Pc	Wt/Set
			IN MM	IN MM		KG/M or KG/Sq	Kgs		
1	ISO-1	75X75X6	3084		1	6.8	20.971	20.97	
2	ISO-1X	75X75X6	3084		1	6.8	20.971	20.97	
3	ISO-2	75X75X6	3084		1	6.8	20.971	20.97	
4	ISO-2X	75X75X6	3084		1	6.8	20.971	20.97	
5	ISO-3	ISP 6MMMS	175	175	4	125.6	3.847	15.39	
6	ISO-3A	ISP 6MMMS	175	60	2	47.1	0.495	0.99	
7	ISO-3B	ISP 6MMMS	175	60	8	47.1	0.495	3.96	
8	ISO-3C	ISP 6MMMS	175	60	6	47.1	0.495	2.97	
9	ISO-4	75X75X6	80		6	6.8	0.544	3.26	
10	ISO-5	65X65X6	3888		1	3.8	34.15	34.15	
11	ISO-5X	65X65X6	3888		1	3.8	34.15	34.15	
12	ISO-6	75X75X6	1130		1	6.8	7.684	7.68	
13	ISO-6X	75X75X6	1130		1	6.8	7.684	7.68	
14	ISO-7	50X50X5	1997		2	3.8	7.589	15.18	
15	ISO-7X	50X50X5	1997		2	3.8	7.589	15.18	
16	ISO-8	50X50X5	1893		2	3.8	7.193	14.39	
17	ISO-8X	50X50X5	1893		2	3.8	7.193	14.39	
18	ISO-9	50X50X5	1033		4	3.8	3.925	15.7	
19	ISO-10	50X50X5	1005		2	3.8	3.819	7.64	
20	ISO-10X	50X50X5	1005		2	3.8	3.819	7.64	
21	ISO-12	ISP 6MMMS	270	163	2	47.1	2.073	4.15	
22	ISO-13	ISP 6MMMS	260	163	4	47.1	1.996	7.98	
23	ISO-14	ISP 6MMMS	146	130	4	47.1	0.894	3.58	
24	ISO-15	50X50X5	2720		2	3.8	10.336	20.67	
25	ISO-16	50X50X5	1861		2	3.8	7.072	14.14	
26	ISO-16X	50X50X5	1861		2	3.8	7.072	14.14	
27	ISO-17	50X50X5	1110		2	3.8	4.218	8.44	
28	ISO-18	50X50X5	1250		2	3.8	4.75	9.5	
29	ISO-19	50X50X5	1588		2	3.8	6.034	12.07	
30	ISO-19X	50X50X5	1588		2	3.8	6.034	12.07	
31	ISO-20	50X50X5	1118		2	3.8	4.248	8.5	
32	ISO-21	50X50X5	1691		2	3.8	6.426	12.85	
33	ISO-21X	50X50X5	1691		2	3.8	6.426	12.85	
34	ISO-22	50X50X5	1734		1	3.8	6.589	6.59	
35	ISO-22A	50X50X5	1734		1	3.8	6.589	6.59	
36	ISO-22X	50X50X5	1734		2	3.8	6.589	13.18	
37	ISO-23	100X100X10	450		2	14.9	6.705	13.41	
<b>TOTAL WEIGHT OF THE STRUCTURE WITHOUT E/S EXCLUDING FASTENERS (IN KG):</b>									<b>464.94</b>
38	ISO-24	75X75X6	1670		1	6.8	11.356	11.36	
39	ISO-25	75X75X6	1900		1	6.8	12.92	12.92	
40	ISO-25X	75X75X6	1900		1	6.8	12.92	12.92	
41	ISO-26	50X50X5	350		4	3.8	1.33	5.32	
42	ISO-27	50X50X6	1672		1	3.8	6.354	6.35	
43	ISO-28	PL06	138	90	1	47.1	0.585	0.59	
44	ISO-29	50X50X6	475		1	3.8	1.805	1.81	
<b>TOTAL WEIGHT OF THE STRUCTURE WITH E/S EXCLUDING FASTENERS (IN KG):</b>									<b>516.21</b>



**DRAWING:-**

**EQUIPMENT SUPPORT STRUCTURE FOR 132KV "ISO WES & WOES"**